

# Challenges/Opportunities

# DRY BEANS

Blair Roth  
Viterra  
Jan 11, 2010



**White Pea**  
Other names: Navy, Alubias  
Chica  
Seeds/100g: 450-200  
450-525



**Azuki**  
Seeds/100g: 120-140

**Dark Red Kidney**  
Seeds/100g: 150-200



**Cranberry**  
Other names: Romano,  
Spotted Sugar, Borlotti  
Seeds/100g: 145-225

**Black**  
Other names: Black Turtle,  
Pinto  
Seeds/100g: 500-550



**Light Red Kidney**  
Seeds/100g: 170-220

**Great Northern**  
Other names: Largo White  
Seeds/100g: 280-330



**Dutch Brown**  
Seeds/100g: 210-300

**Pink**  
Seeds/100g: 330-400



**Bean Flour**

**Small Red**  
Other names: Red Mexican  
Seeds/100g: 275-330

**Otazo**  
Seeds/100g: 350-400

 Canada's bean growing regions

*Did you know...  
...pulses are 20  
to 25% protein,  
which is double  
the amount  
found in wheat  
and three times  
the amount  
found in rice?*

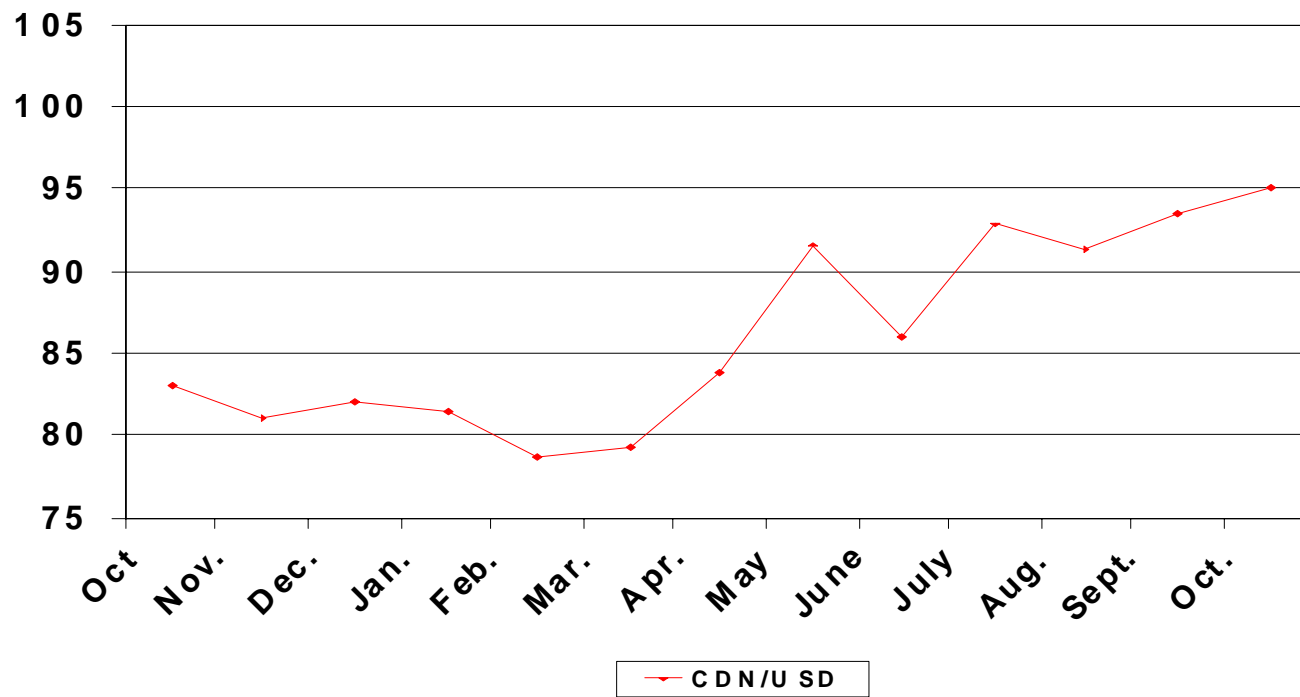




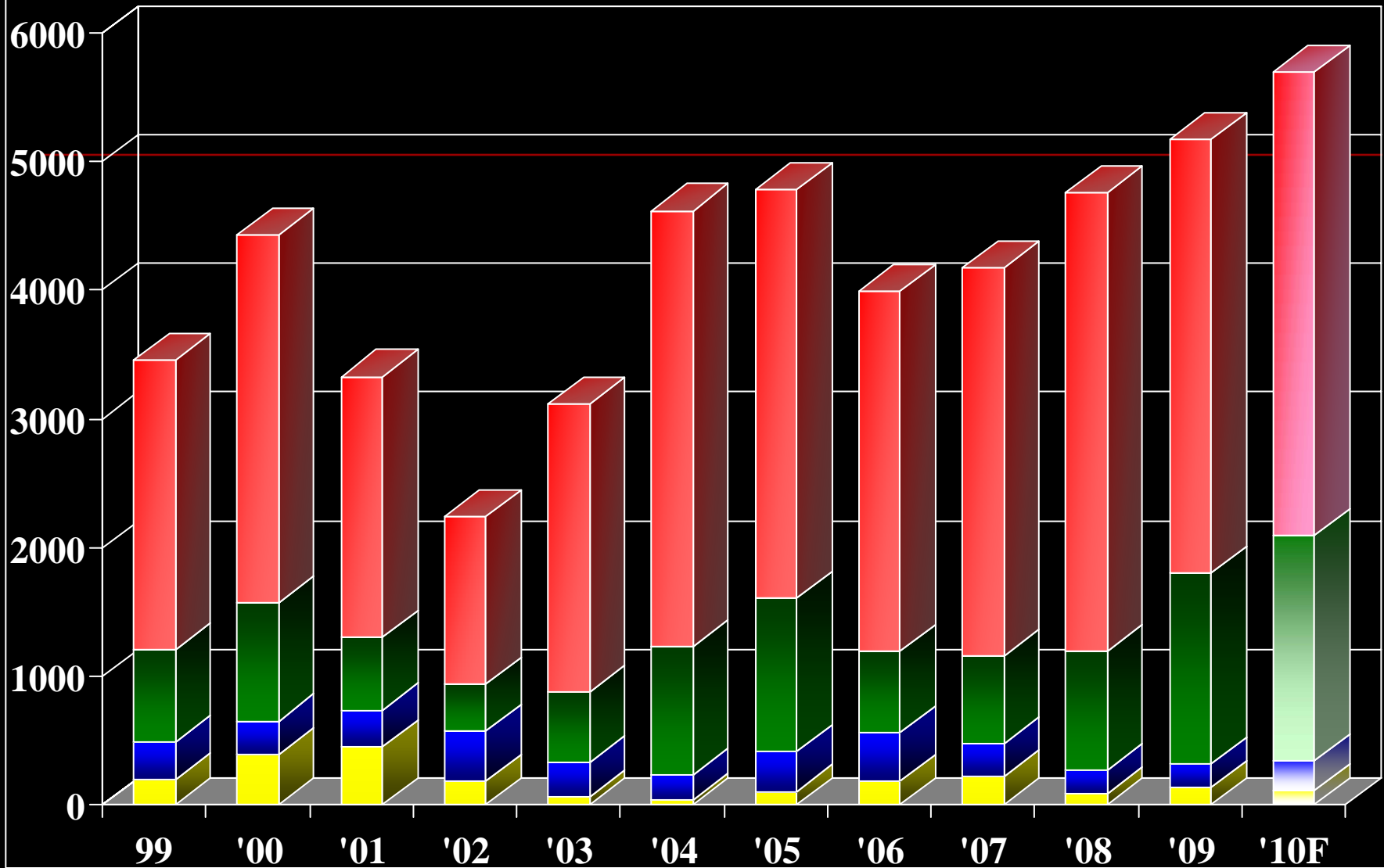
**MACKAY**  
American Spectator

# Exchange Rates (US vs C\$)

## Canadian Vs. US Dollar



Western Canadian Pulse Production (000 MT)



Chickpea Dry Bean Lentil Pea

# DRY BEANS

---

- S+D fundamentals...solid.
- In spite of strengthening C \$.
- Marketplace price volatility due to working capital issues in USA.

# Varietal Adaptation

---

- MATURITY - earliness
- PLANT ARCHITECTURE - upright
- DISEASE TOLERANCE – blight, white mold
- SEED QUALITY – bright color, shape
- YIELD - improvements

# Viterra – Varieties

■ AC Island 2007

---

■ AC Polaris 2000

■ AC Alert 2002

■ AC Resolute 2006

■ AC Redbond 1999

■ AC Black Diamond 2000

■ AC Black Violet 2003

■ Myasi\*\*\* 2007

■ “ AC “ is an official mark used under license from Agriculture and Agri-Food Canada

■ \*\*\* under license from ADM SeedWest

# Slow darkening pintos



# Disease Control

---

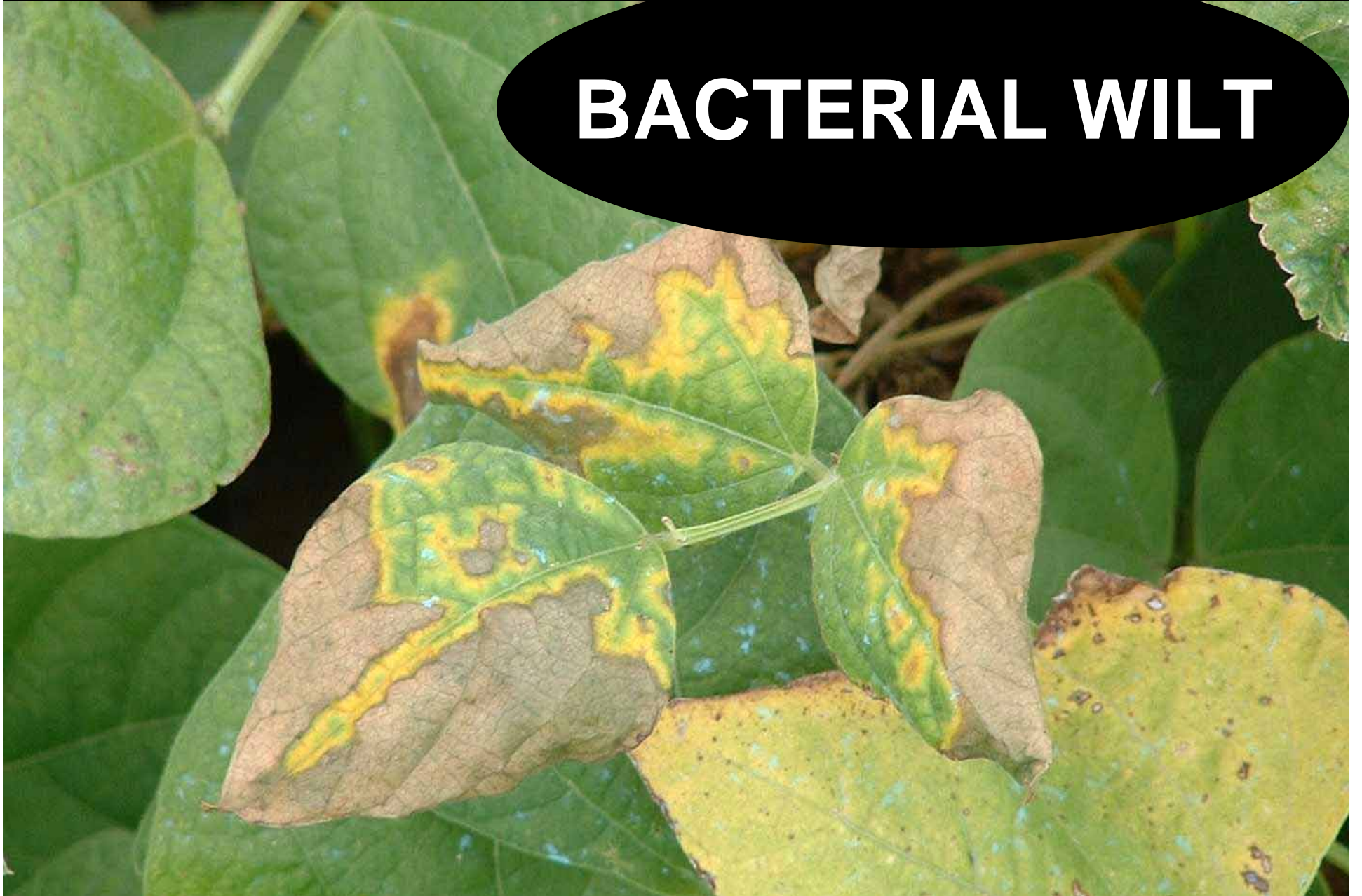


**SCLEROTINIA – WHITE MOLD**



**Sclerotinia – White Mold**

# BACTERIAL WILT



# BROWN SPOT





**HALO BLIGHT**



# Solid Seeding 2009

**2550 Acres**

Winchester

CDC Pintium

---

AC Polaris

AC Resolute

AC Black Diamond

Pink Floyd

# Drills/Planters

---

- JD 1890 air drill with disc opener(9 )
- Great Plains w/disc opener
- John Deere 9350
- Bourgault 3310
- Monosem planters
- John Deere 7300
- IH Hoe drills



**Burbridge Farms – reds  
Monosem – double planted**

**TW Farms – AC Polaris  
Solid Seeded/Swath**





**TW Farms – AC Polaris  
Solid Seeded/Swath**

**Eltwo Farms & Torlang Farms  
Paired row and seedbed prep**



**Eltwo Farms & Torlang Farms  
Paired row and seedbed prep**





**Varekamp Farms  
2 x JD 1730 12 row – 22” planters on JD tool bar  
With RTK GPS system**

**Ad Gronenberg Farms  
“strip tillage” on sandy loam  
bean ground**



**Arthur & Byron Jaques  
30" ridging with rolling baskets**



# Dammer Diker



An aerial photograph of a dammer dike field. The field is composed of numerous parallel rows of plants, likely dammer, which are small, dark, and densely packed. Between the rows, there are numerous small, irregularly shaped depressions filled with water, creating a pattern of light-colored patches. The field extends to a flat horizon under a bright, hazy sky. The overall color palette is dominated by dark browns and blacks of the plants, contrasted with the lighter, silty water in the depressions.

**Dammer Diker**



**Herman Neufeldt  
Offset mounts on front  
mounted rod**





A photograph of an industrial facility, possibly a refinery or chemical plant, silhouetted against a vibrant sunset sky. The sky transitions from a deep red at the horizon to a dark, almost black, at the top. The industrial structures, including towers and pipes, are dark against the bright background. Some lights are visible on the facility. The entire image is framed by a thick black border.

**The End**