



North American Stream Hydrographers
Advancing the science and practice of hydrometry





- society that brings researchers, practitioners and hydrometric data-users together in a community of practice for advancing the science of hydrometry to better resolve - and communicate - best practices and innovative solutions for the challenges of streamflow monitoring.
- NASH is closely affiliated with the Canadian Water Resources Association but has a broader geographic scope, with members from Mexico and the United States as well as Canada.



Working Groups

- River Ice and Winter Streamflow Working Group
- Uncertainty Analysis Working Group
- Network Design Working Group
- Common Data Access Framework
- Hydrometric Standards and Training

Activities

- CWRA Session in 2012 devoted to NASH
- 2012 Under Ice Measurement Workshop –
Edmonton
- 2013 Flotilla

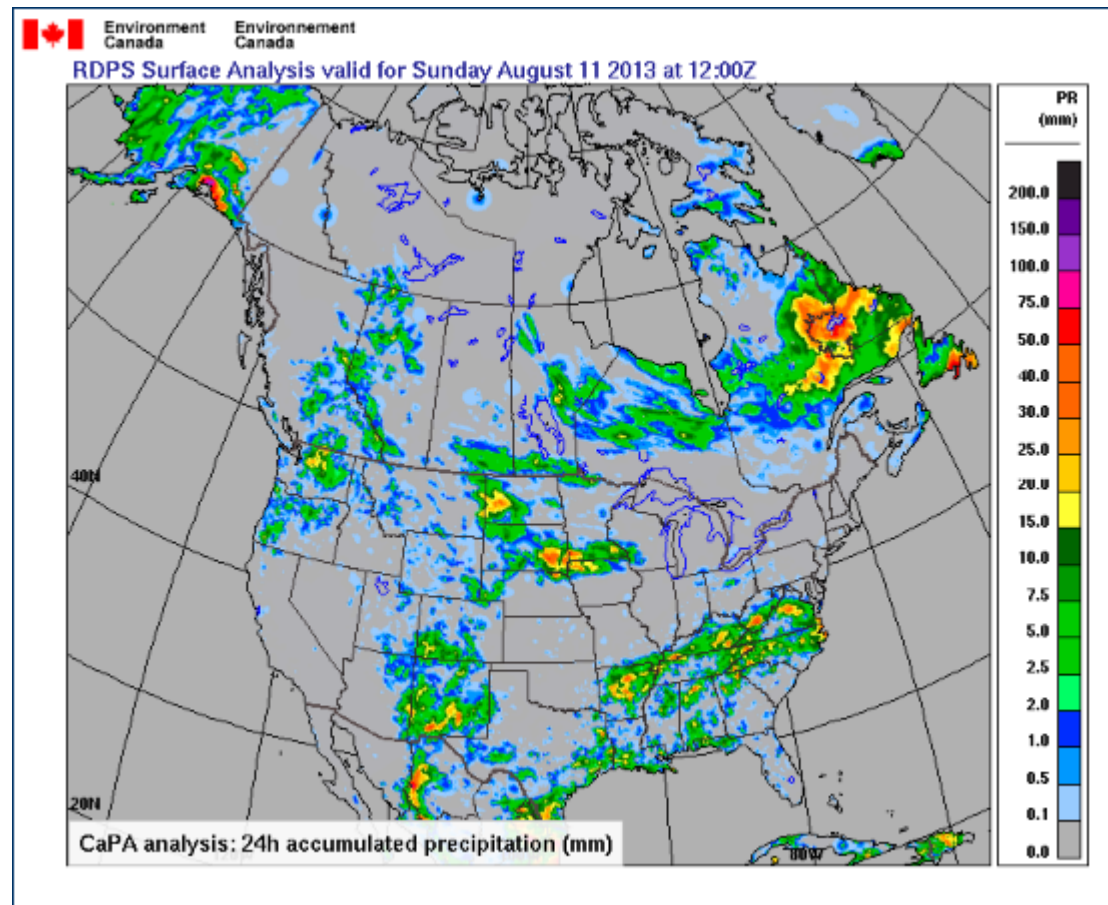
Governance

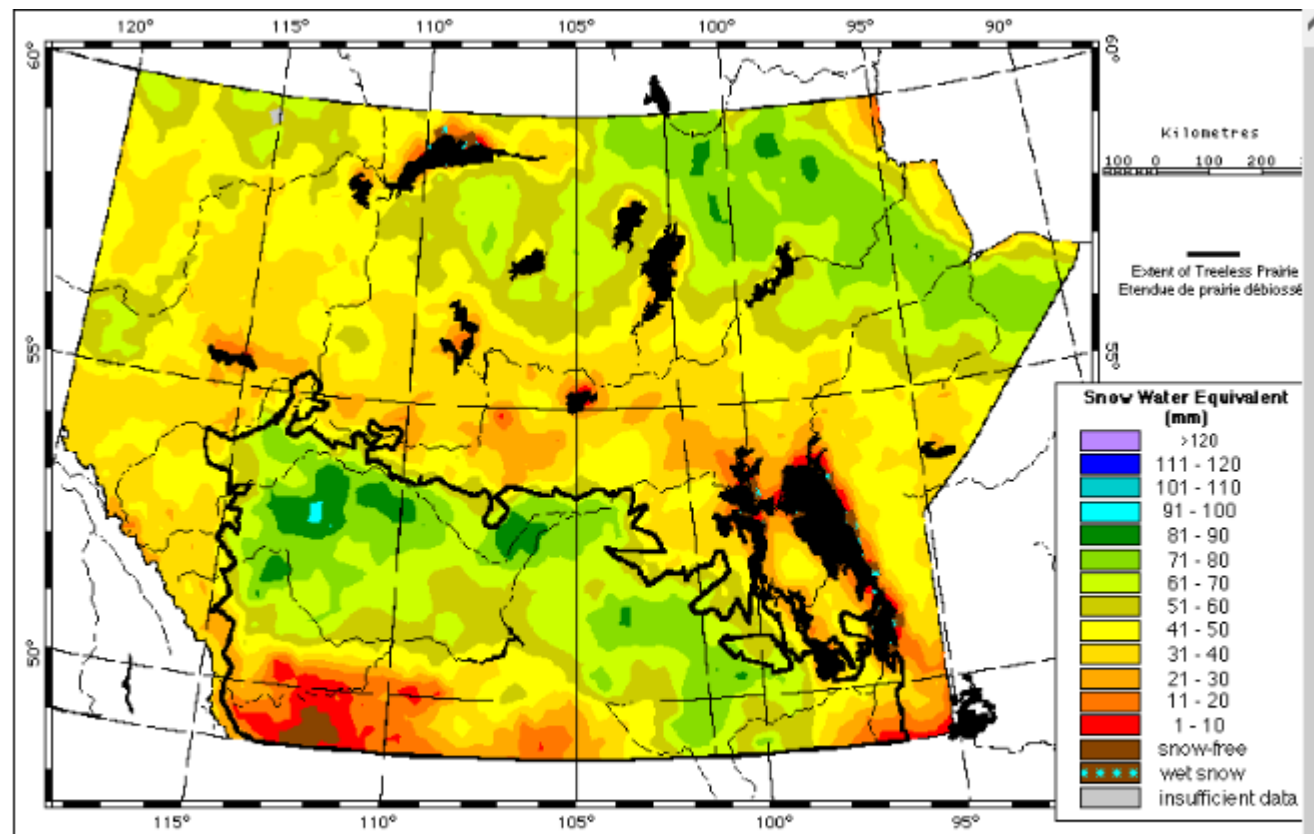
- Constitution
- Elected board
- Membership
- Annual General Meeting to be held on August 19, 2013.
 - www.hydrographers.org

Membership

- Focus on practitioners...
- Workshops on specific topics.
 - If there is a demand, HASH will try to meet the needs.

The Need for NASH and Monitoring



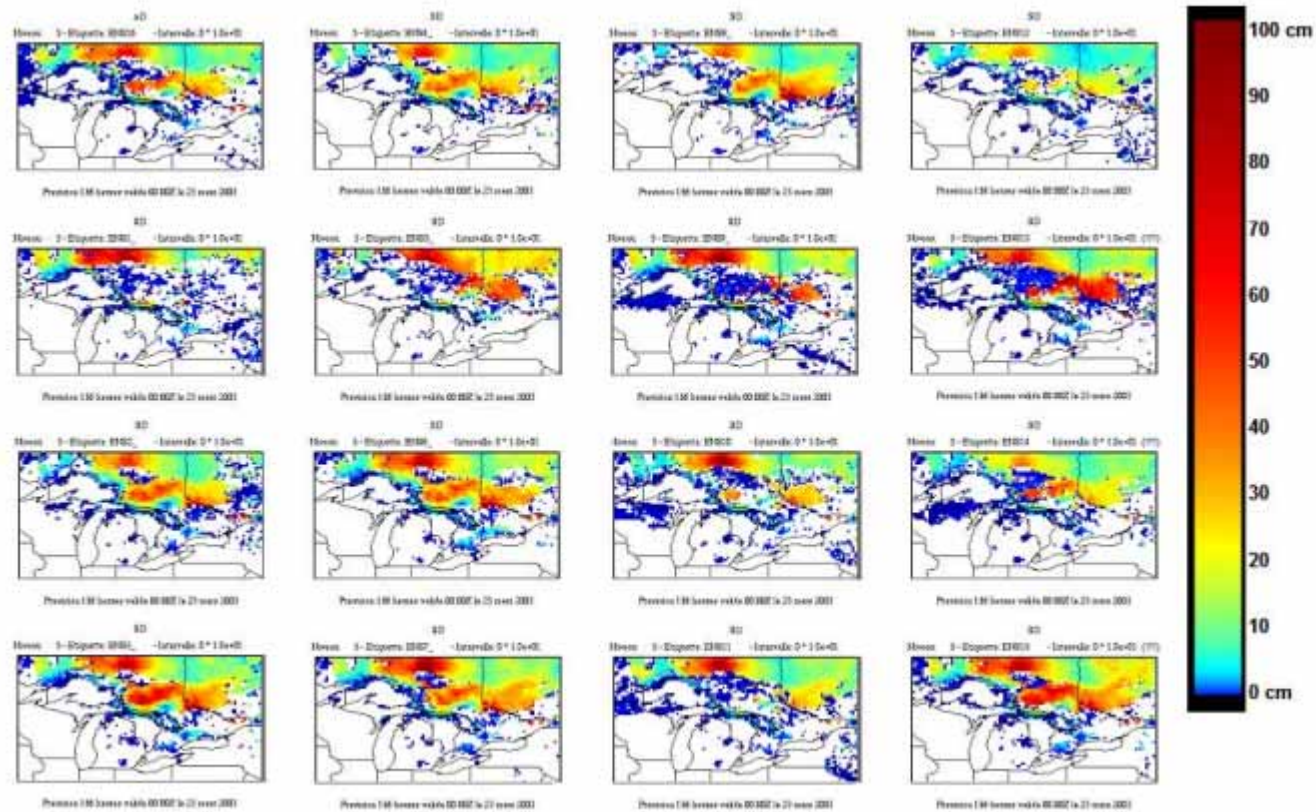


January 1, 2013

Snow Water Equivalent

(millimetres)

MESH



- The need is there for coordinated monitoring activities.
- NASH will work to represent and hopefully be a voice in the coordination and advancement of these needs.

Under Ice Workshop 2014 - Winnipeg

