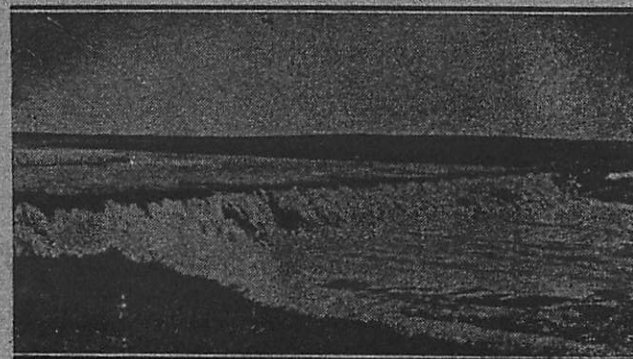


ALBERTA'S
Famous Doors of Hospitality

Lethbridge Hotel and Coffee Shop Lethbridge	Stettler Hotel Coffee Shop and Banquet Room Stettler	Victoria Hotel Next Strand Theatre Calgary	Empress Hotel and Coffee Shop Empress
Grand Hotel and Coffee Shop Edmonton	Cecil Hotel and Coffee Shop Medicine Hat	Sylvan Lake Hotel and Dining Room Sylvan Lake	Newell Hotel and Coffee Shop Brooks
King Edward Hotel Excellent Dining Room A Modern Year Round Hotel Banff	Empire Hotel Opposite the C.P.R. Calgary		Cascade Hotel Dining Room and Coffee Shop A Modern Year Round Hotel Banff
Union Hotel and Coffee Shop Athabaska	National Hotel and Coffee Shop Hanna	Buffalo Hotel Coffee Shop and Banquet Room Red Deer	Alberta Hotel and Dining Room Vegreville
Dominion Hotel Opposite Palliser Calgary	Lacombe Hotel and Coffee Shop Lacombe	Park Hotel Coffee Shop and Banquet Room Red Deer	Grand Union and Coffee Shop Coleman

THE HERALD, HANNA, ALBERTA

RED DEER RIVER IRRIGATION DEVELOPMENT



"Every drop of water that runs to the sea without rendering a commercial return is a public waste."—Herbert Hoover

EAST CENTRAL IRRIGATION
ASSOCIATION

EAST CENTRAL IRRIGATION ASSOCIATION

Officers 1954

James A. Cameron	President
W. O. Turner	Secretary
R. L. Wood	Treasurer
A. A. Hutton	Vice-President
L. E. Helmer	Vice-President
R. W. Ringdahl	Vice-President

★ ★ ★

DIRECTORS

Dr. W. G. Anderson	Wardlaw
Morgan Baldwin, Farmer	Hanna
W. C. Barrack, Farmer	Cereal
Fred W. Beynon, Farmer	Esther
F. T. Colley, Agent	Stettler
Dr. A. M. Day	Consort
Paul Farnalls, Farmer	Halkirk
H. H. Forster, Rancher	Cessford
C. K. French, Druggist	Hanna
Glen Griffith, Farmer	Cessford
A. H. Illsey	Youngstown
George Johnston, Farmer	Loyalist
H. H. Lewis, Agent	Drumheller
R. M. Merchant, Farmer	Coronation
G. F. Middleton, Supt. C.N.R.	Calgary
W. F. Peers, Merchant	Acadia Valley
J. M. Pierce, Rancher	Carolside
James Pringle, Farmer	West Wingham
Lorne Proudfoot, Farmer	Chinook
Charles Seefeldt, Rancher	Pollockville
Maurice Solberg, Farmer	Carolside
R. Steele, Manager	Oyen
John A. Williams, Farmer	Castor

A NATIONAL ASSET —

Canada has a national asset which has heretofore been entirely undeveloped. This is the Red Deer River which crosses the entire Province of Alberta without a single dam, irrigation canal or power turbine to prevent its waters flowing uselessly to the sea. This waste is tragic, especially since for over 150 miles, the river flows through what was once a rich farming country but is now largely depopulated due to lack of water. The solution is to dam the Red Deer River just west of Stettler, Alberta and by a gravity canal store the flood waters in natural reservoirs south of Federal and Coronation, where this water can be used to irrigate 478,000 acres now selected and further areas up to a total of 900,000 acres. These irrigable acres commence immediately east of Hanna and extend 70 miles southwest to the Red Deer and south and south-east of Coronation to Sounding Creek and beyond it to Acadia Valley.

This development of the Red Deer River has already been surveyed by the engineers of the P.F.R.A., acting under the Dominion Department of Agriculture. A permit has been granted by the Province of Alberta to divert 750,000 acre feet per year from this river for irrigation purposes. The surveys have been advanced to a point where construction could be commenced now.

CONNELLY'S COFFEE SHOP

"A Good Place To Eat"

Hanna

Alberta

ROSELYN COAL

New Modern Steel Tipple — Excellent Screening All Sizes

Prompt Loading for Trucks and Railway Shipments

WESTERN DOMINION COAL MINES LIMITED

SHEERNESS

ALBERTA

THE FARMERS' EXCHANGE

New & Used Furniture — Electrical & Propane Appliances
PHONE 26 **HANNA**

For Your Livestock Supplies See —

DEVEREAUX DRUG CO.

PHONE 201 **HANNA**

KIRBY CARTAGE CO.

TRUCKING and BULLDOZING
HEAVY HAULING

"WE MOVE EVERYTHING"

PHONE 183 **HANNA**

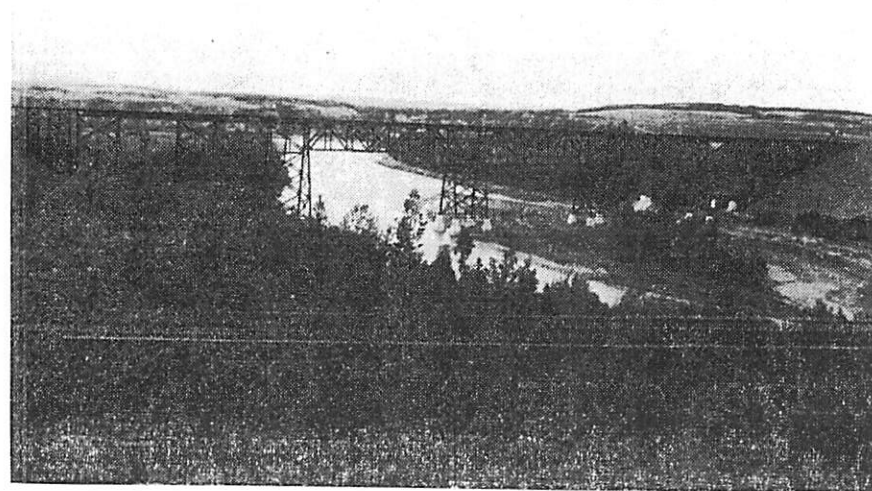


**"HAVE IT
 PRINTED IN
 HANNA"**

Complete, efficient service in all lines
 of job printing.

PHONE 52

THE HANNA HERALD



PROPOSED DAM SITE — This is the site of the proposed Red Deer River Diversion Dam at Ardley. The structure in the centre of the picture is the C.N.R. bridge.

COST WILL BE LOW —

The cost of this project will be low. This is due to the fact that the water can be placed in the main canal without pumping, will be stored in natural reservoirs and then carried, first through natural channels and then as the scheme develops through canals to the drought areas of East Central Alberta.

A late engineering report on this project shows an estimated cost as follows:

Clearwater Diversion	500,000.00
Red Deer River Dam & Reservoir	8,227,500.00
Main Canal	7,568,850.00
Reservoirs & Connecting Canals	4,414,875.00
Contingencies	4,289,775.00
Total	25,000,000.00

The cost of the distribution system has been estimated at 500,000 acres at \$25 or a total of \$12,500,000.00.

FANO'S GARAGE

Acetylene & Electric Welding — New and Used Cars & Parts
PHONES: Bus. 277, Res. 277-R-2 **HANNA**

THE CENTRAL GARAGE

Dealers In Ford and Monarch Cars
Imperial Oil Products

Wm. Klipper, Prop.

PHONE 102

HANNA

RED POLL CATTLE

Breed Red Poll Cattle. The dual purpose breed — good beef — lots of milk. The ideal breed for the ordinary farmer and stock man. No horns. Best for crossbreeding, uniform in color. 4% butterfat. Bred for farmers by farmers.

Jack Sutherland — Sunnybrae Farm
HANNA — ALBERTA

CRYSTAL COAL

SHEERNESS — ALBERTA

NOW BEING PRODUCED UNDER NEW MANAGEMENT

We recommend this to you as the most economical coal you can buy: BECAUSE OF

Its high heat value
Its low ash content
Its freedom from impurities
Its uniform high quality
Its low cost per ton

FARMERS AND TRUCKERS — We are especially equipped to give you prompt and efficient service.

LEHIGH COAL CO. LTD.

SOIL ANALYSIS MADE —

Soil analysis have been made and long term experiments to ascertain the response of the soil to irrigation are now in progress. Until these have been completed we have available to guide us the combined experience of the farmers who have cropped this land over the past 40 years and found it highly productive whenever sufficient moisture was available. Irrigation applied by individuals to their own farms throughout this period has demonstrated without question that these lands respond successfully to water.

STOCKS

BONDS

LAURENCE B. GIBSON INVESTMENTS LTD.

Members of The Calgary Stock Exchange

603 - 8th Ave. W., Calgary

Phone 27078

ODELL'S LIMITED

HARDWARE — GROCERIES — CROCKERY

PHONE 20

HANNA

ALBERTA

WHYTE & BELLIS
FUNERAL DIRECTORS

Ambulance Service
Flowers and Grave Monuments

PHONE 100 or 94

HANNA

ACADIA DIST. No. 11 FARMERS' UNION OF ALBERTA

The F.U.A. is a farmers' organization always keenly alive to all problems affecting our rural people, has been actively urging more efficient use of our water resources for many years. Has strongly advocated immediate action on the Red Deer Diversion Project. Also joint provincial and federal action in setting up a Great Plains Water Authority to the end that we have unity and coordinated action on all questions of water use and conservation. Won't you come in with us to build up a bigger and better Farmers' Organization?

HUTTON'S GARAGE

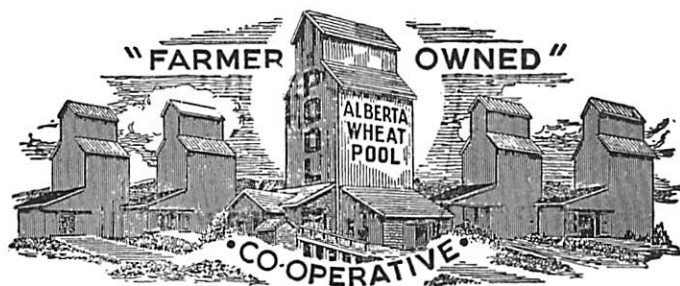
DODGE - DESOTO CARS — MINNEAPOLIS
AND OLIVER FARM MACHINERY

A. A. HUTTON & SONS, PROPRIETORS

PHONE 13

HANNA

The Alberta Wheat Pool is wholeheartedly behind the East Central Irrigation Association in its endeavours to hasten the construction of an irrigation system which would provide for the establishment of a sound basis for agriculture on a large area of fertile land.

**POSSIBILITIES FOR SETTLEMENT —**

In "Possibilities for settlement on Irrigated Lands in Alberta" as presented to the Soils Group of the Canadian Society of Technical Agriculturalists at the Annual Meeting at Olds June 18-19, 1942 A. E. Palmer, Acting Superintendent of Dominion Experimental Station, Lethbridge, establishes the average irrigable farm to be 120 acres per family. On this basis the present project would support 7,500 families or a direct farm population of 37,500. This is in contrast to the 750 families now eking out a living in this area. Mr. Palmer also estimates the actual farm population to be only two-fifths of the population supported by the irrigated lands in Alberta. It would therefore follow that the project is capable of supplying a livelihood for a population of 93,750 people.

POWER —

It will make possible the future development of an immense hydro electric power project by providing the works around which such project may be built. The dam on the Red Deer River will store water to a height of approximately 180 feet. From this dam, water could be diverted into Buffalo Lake for storage for river control and power. Approximately one and a half million acre-feet can be stored in the lake and fed back into the Red Deer River. To provide this volume of water, it would be necessary to divert other streams in to the Red Deer near its source. This will ensure not only a constant supply of summer and winter water but also a continuous supply of winter electric power. The power development will be one of the largest and most attractive in Western Canada.

Franklin's Plumbing & Sheet Metal Works

I. C. Franklin, Prop.

BOX 139

HANNA

WHEN IN HANNA STAY AT ...

THE SEYMOUR HOTEL

"A Sportsman's Rest"

Fully Licensed

R. A. WOLFE, Prop.

PHONE 54

STOCKWATERING —

The main canal and tributaries to be used will supply a constant flow of water to approximately 1200 miles of dry creek channels, traversing an area containing 5 million acres of range land. This will materially increase the livestock carrying capacity of these lands and will give a constant supply of water to existing dams, as well as dams which will be constructed along the various water courses.

Building and Contracting

Estimates Furnished and Contracts Given
On Your Drawings or Blueprints

See Your General Builder

A. W. STUBBS

PHONE 381

HANNA

JENKIN'S GROCETERIA LIMITED

"WHOLLY CANADIAN OWNED"

Quality and Service at Popular Prices

PHONE 124

HANNA

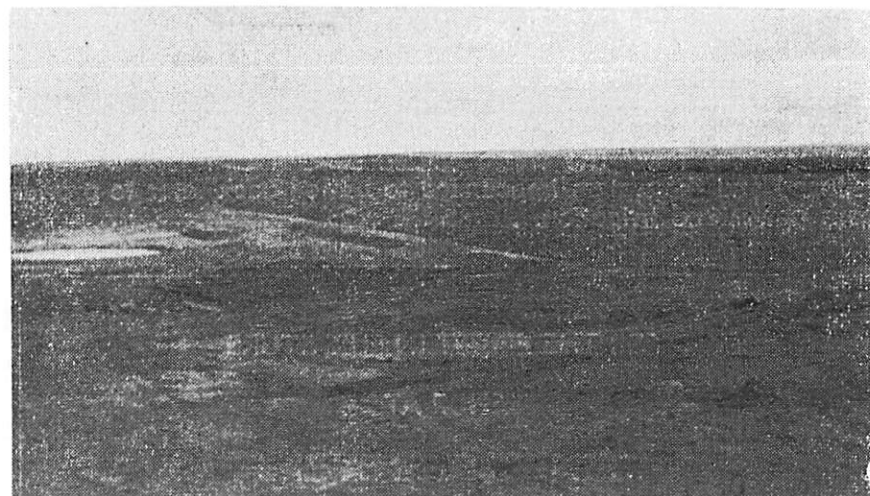
BEAVER (ALBERTA) LUMBER LIMITED

YOUR "DO-IT-YOURSELF" HEADQUARTERS

YARDS AT

OYEN
Phone 31

HANNA
Phone 21



BERRY CREEK DAM — A P.F.R.A. project completed in 1948. This dam will hold five billion gallons of water for irrigation and stockwatering. Length 1500 feet, height 55 feet.

THE FINEST IN DRIVING PLEASURE

PLYMOUTH — CHRYSLER

On Sale at

K & B MOTORS

Plymouth - Chrysler Dealers
Massey-Harris Farm Implements

HANNA

PHONE 78

MOORE'S MOTORS

PONTIAC — BUICK — G.M.C. TRUCKS

Full Line of General Motors Parts and

Accessories — Firestone Tires

"THE MODERNIZED GARAGE"

BOB MOORE, Proprietor — Phone 62

NORMAL FLOW OF RIVER PROTECTED —

Buffalo Lake insofar as its present proposed use is concerned can be raised to its full supply level and be used as storage to feed water back into the Red Deer River by controlled flow to ensure to users of water below the dam on the Red Deer River an adequate and constant flow. The waste caused by annual floods would be reduced and the waters impounded to be fed back later to provide both power and irrigation.

FOR THE FINEST IN FURNITURE

SHOP AT

LUND'S FURNITURE

H. LUND, Prop.

Phone 325

SEE OUR EVERY DAY VALUES —

Zenith Washing Machines, Marshall Wells Reliable Ranges,
Majestic Radios, Premier Vacuum Cleaners, Marshall Wells
Paints and Varnishes — We Are Authorized Dealers
For Coleman Heating Equipment

MARSHALL WELLS STORES

L. D. WARWICK (Owner)

PHONE 149

CENTRAL ALBERTA DAIRY POOL

Wholesale Dealers in Butter, Milk, Cream and Eggs

Ship to Us For Best Results

J. A. RASMUSEN, Mgr.



EARLY HOMESTEADER — The man in the above photo is none other than Jas. Cameron, president of the association. The photo was taken in 1910 and shows the "unique" motive power in those days.

CLARENCE MOHL

TRUCKS, TRACTORS AND FARM IMPLEMENTS
WELDING & GENERAL REPAIRS

IHC Refrigerators and Home Freezers
Sturdie Propane, Fridges, Stoves and Appliances

PHONE 121

HANNA

THE CO-OPERATIVE WAY IS
THE ECONOMICAL WAY TO

Insure Your Crop

DON'T GAMBLE WITH HAIL

BE SURE — INSURE WITH

ALBERTA HAIL INSURANCE BOARD

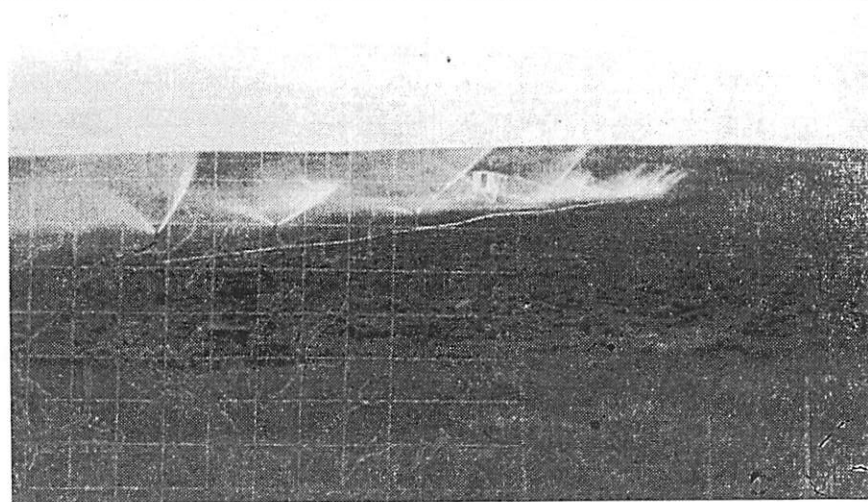
ASSURED RESULTS —

The livestock industry when assured permanence of summer water and winter feed will readily increase. The carrying capacity of these dry range lands is now averaging one head of stock per 40 acres. The same lands watered will carry five times as much stock. Irrigation authorities maintain that every irrigated acre stabilizes and supplements 4 acres of dry lands or nearby range land by providing sure supplies of feed for livestock and preventing sacrificing herds of stock, so frequently seen during the past thirty years on our western plains, due to lack of feed. The area would then be stabilized and a great feeder industry made possible.

Irrigation farming ensures and permits the growing of diversified crops. With the high grade soil in this area, abundance of alfalfa and other fodder crops, beans, peas, sugar beets, flax and coarse grains, can be produced in the whole of the area because in addition to the very productive soil, over the whole of the plateau there are ideal climatic conditions both as to heat and long hours of sunshine during the whole of the growing season.



ANOTHER DAM SITE — This is another view of the site for the proposed Red Deer River Diversion Dam at Ardley. Taken from the top of the river banks that is the Red Deer flowing through the centre.



SPRINKLER IRRIGATION — This method of irrigation was employed in P.F.R.A. and Special Areas experiments at plots near Carolside.

PRESENT DEVELOPMENT OF THE AREA —

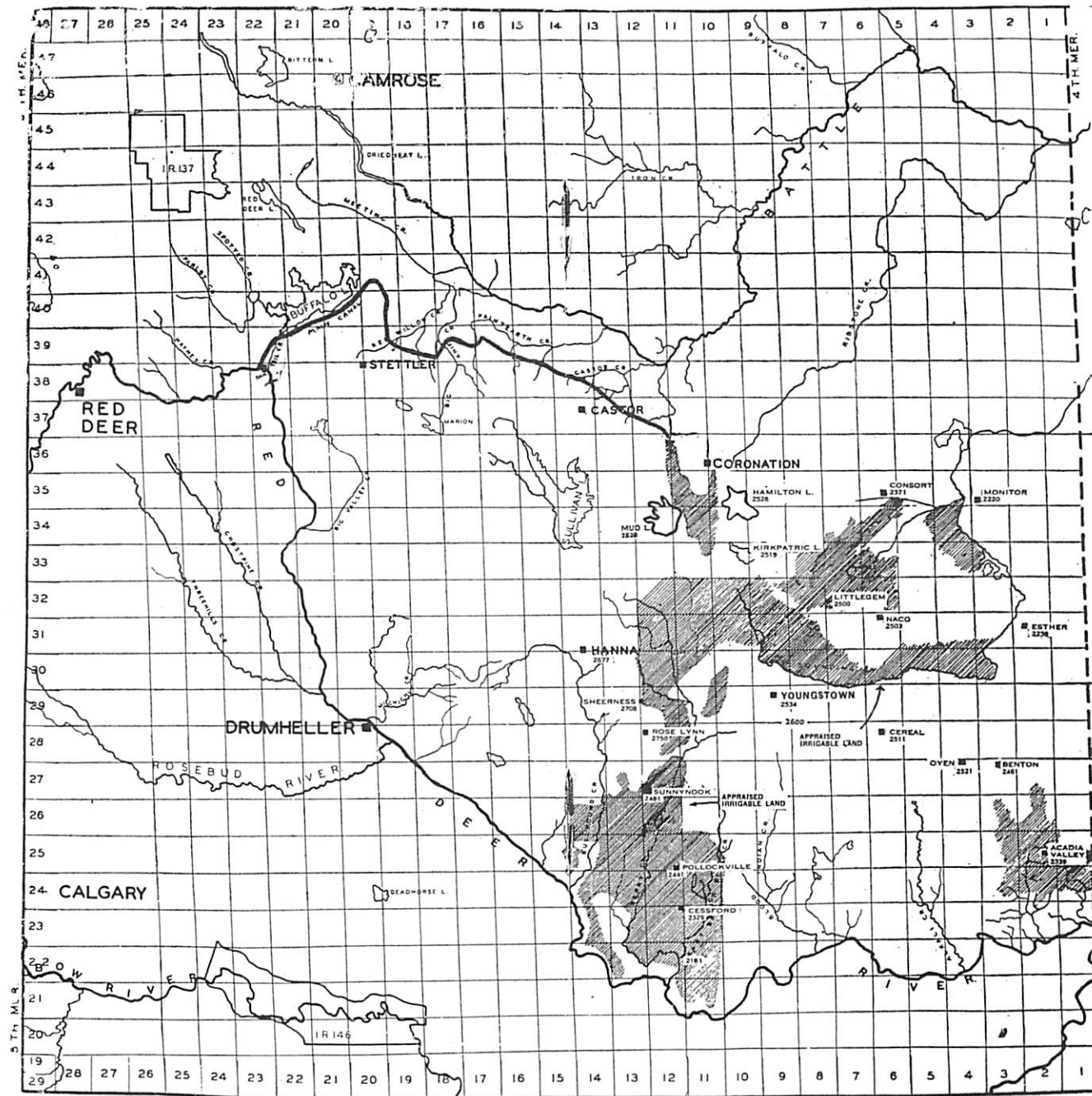
Adequate transportation services are provided in this area by the Canadian National and the Canadian Pacific Railways. The Goose Lake Line of the C.N.R. from Calgary to Saskatoon provides an artery of transportation for the central and southern sections. The C.P.R. branch from Lacombe, Alberta east serves all the northern part of the area. In addition to these two main lines there is the Hanna to Warden branch of the C.N.R. and the Hanna to Medicine Hat line of the C.N.R., the latter completed from Hanna south to as far as Wardlaw on the Red Deer River; the C.N.R. line from Scapa east to Loverna and a point line of the C.N.R. and the C.P.R. from Youngstown to Coronation. Facilities for motor transportation are also good. There are two main highways, east and west, and two highways north and south, together with secondary highways or market roads which have been built up through the years by the Municipal authorities. These facilities along with adequate telephone lines are awaiting increased settlement and the settler will not have to pioneer, enduring the hardships and loneliness ordinarily incident to new communities.

The territory has now established in it seven up to date hospitals, as well as schools, churches, a judicial centre and all the advantages of old settled communities.

SILVER CLEANERS

Tailoring & Dry Cleaning Specialists — Men's Wear
Syd Silverman **Hanna**

RED DEER RIVER DEVELOPMENT



Gross acreage that can be irrigated shown on shaded portions of above map amounts to approximately 500,000 acres.

THESE CONSORT BUSINESS MEN SUPPORT IRRIGATION**CENTRAL GARAGE**

John Deere, Chrysler, Sturdiegas, Horn-Draulic Loaders
E. B. Fertilizer

L. Robinson, Prop. Phones: Bus. 6, Res. 19, Consort

GEO. McFETRIDGE & SON

CHEVROLET - OLDSMOBILE
I.H.C. IMPLEMENTS — GOODYEAR TIRES

CONSORT THEATRE

"THE HOME OF GOOD PICTURES"

H. M. Scott, Mgr. Consort

PIONEER STORE

DRY GOODS & GROCERIES

F. L. Wiltse, Mgr. Consort

R. TOPHAM

BARRISTER, SOLICITOR, NOTARY, ETC.

Consort Alberta

CONSORT DRUG STORE

THE REXALL STORE

Phone 37 Consort

THE CONSORT ENTERPRISE

FOUNDED IN 1912

Charlie Scott, Publisher Consort

DR. A. M. DAY

PUREBRED HEREFORD CATTLE

Consort Alberta

C. G. STILLINGS

AGENT: Fire Insurance, Wawanesa Mutual Insurance Co.;
Life Insurance: Manufacturers Life Insurance Co.

CONSORT AUTO WRECKERS

GENERAL TRUCKING — TAXI SERVICE

Oro Kelts, Prop. Consort

FRANK GATTY

Auctioneer & Real Estate — Ranch & Farm Lands For Sale
License No. 126 '53 Consort

Consort District Co-operative Ass'n Ltd.

GENERAL MERCHANTS

W. C. Carl, Mgr. Consort

CONSORT HOTEL

MODERN — FULLY LICENSED

L. Walker, Prop. Phone 2, Consort

FORD SERVICE GARAGE

Ford - Monarch Dealer. Ford Tractors & Dearborn Equipm't
Harold Wiltse, Prop. Consort

GRAHAM HOEME PLOWS — WADE SEEDING
EQUIPMENT — WELDERS

WADE BROS. — CONSORT**KELTS CONSTRUCTION**

DAMS — DUGOUTS — ROAD WORK

Doug Kelts Consort

JERRY'S COLD STORAGE

Fresh Frozen and Cured Meats — Locker Service

J. F. Sodeman & Son Phone 11, Consort

H. S. KELTS

DUSTING MACHINES — FARM CHEMICALS

Phone 10 Consort

CROWN LUMBER CO.

CONSORT, ALBERTA

A. Read, Mgr. Phone 40

KROEGER BROS.

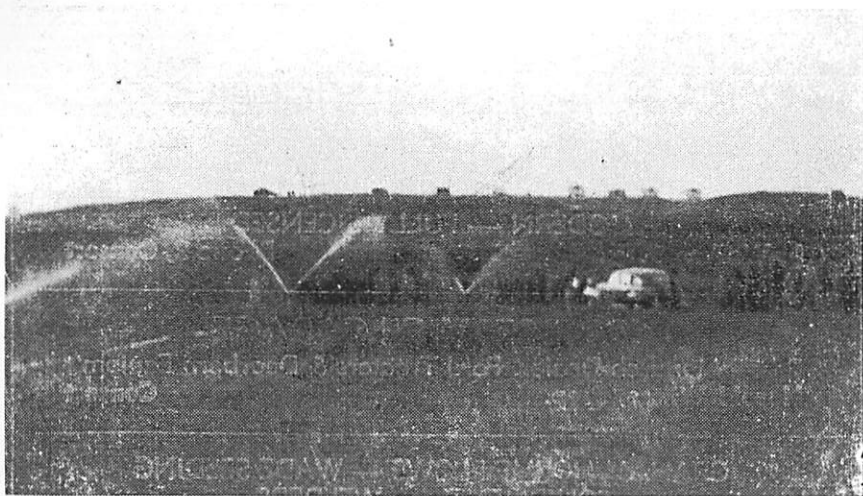
MASSEY-HARRIS SALES AND SERVICE

REPAIR SHOP & STORAGE

ROYAL CAFE

MEALS — TOBACCO — CONFECTIONERY

Moh Jack, Prop. Consort



SPRINKLER IRRIGATION — This is a photo of a sprinkler system in operation. Using water stored from dugouts or dams, the sprinkler system entails the use of pressure pumps.

SMITH'S SHOES
"YOUR FAMILY SHOE STORE"

Phone 9

Hanna

ALLIS-CHALMERS SALES & SERVICE
BARTMAN'S MACHINE SHOP

PHONE 45

HANNA

Irrigation Is Essential for Good Farming as

THE REXALL DRUG STORE

Is for Good Health

C. K. FRENCH, B.Sc.

IN APPRECIATION —

This Association wishes to convey its sincerest thanks to our advertisers. Their generosity has made possible the publication and distribution of this pamphlet. These business firms realize to the fullest extent that irrigation is not only a great producer of goods but that irrigationists are the greatest and most consistent consumers of goods and services. A balanced economy for all grows out of every irrigation project.

Membership in this Association is open to all persons desiring to support the development of irrigation. See your nearest director or remit \$1.00 direct to the Treasurer and you will receive your membership card and be furnished with reports as progress is made.

HANNA BAKE SHOP

THE STORE OF GOOD THINGS TO EAT

Phone 116

Hanna

Canada's Pioneer Farm Co-operative
Joins With All Supporters of The
EAST CENTRAL IRRIGATION ASSOCIATION
In Its Efforts to Ensure Stable Productivity
Through the Means of Irrigation
In This Potentially Prosperous Area of Alberta
UNITED GRAIN GROWERS LIMITED
"SERVING AGRICULTURE SINCE 1906"

A complete farm service

• 685 ELEVATORS
• FARM SUPPLIES

UNITED GRAIN GROWERS LIMITED

PROPERTY, HAIL
and CAR INSURANCE
TERMINALS
PORT ARTHUR - VANCOUVER

UNITED GRAIN GROWERS
LIMITED
"CANADA'S PIONEER FARM CO-OPERATIVE"

THE CORONATION COMMUNITY BOARD OF TRADE

Strongly Supports the Irrigation Project
and Solicits Your Patronage
Of These Advertisers

THE CORONATION REVIEW

PRINTERS & PUBLISHERS

CORONATION

ALBERTA

WALLACE'S LTD.

Groceries and Ready-To-Wear

Coronation

Alberta

J. ANDERSON & SON

Farm and Electric Supplies

Coronation

Phone 56

McKENZIE MOTORS

General Motors Products

Coronation

Phone 34

FRED CRANE

Maple Leaf Petroleum Ltd.

Coronation

Phone 6

ROYAL CROWN HOTEL

Coronation, Alberta

AT HEAD OF IRRIGATION STORAGE
FULLY MODERN AND LICENSED

Joe Kappa, Mgr.

Phone 100

STUCKEY JEWELLERS

BRIDAL WREATH & BLUE BIRD DIAMONDS

Phone 99 Stettler

Phone 121 Coronation

INTERNATIONAL HARVESTER

E. LAMROCK

Coronation

Phone 6

FOOD MARKET & BAKERY

Complete Line of Groceries and Frozen Foods

Coronation

M. Price

Phone 8

CORONATION CO-OP STORE

GROCERIES — HARDWARE

Coronation

Phone 13

COLEMAN & GERHART LTD.

DRUGS and STATIONERY

Coronation

Phone 103

McINTOSH MOTORS LTD.

Mercury, Lincoln, Meteor Cars, Mercury Trucks
John Deere Machinery - Firestone Tires - Texaco Products

Coronation

Phone 71

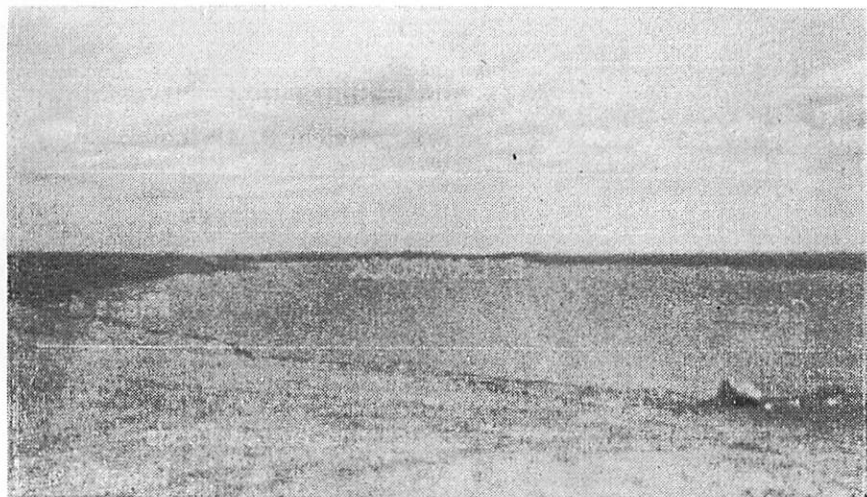
ALBERTA LUMBER CO., LIMITED

CORONATION, ALBERTA

We heartily join with Coronation business men in support
of irrigation, believing that it is the first step in a prosper-
ous agriculture for this particular area.

B. PURDUE, Mgr.

Phone 74



BERRY CREEK DAM JUNE 1951 — Another view of this structure on the Berry Creek after the reservoir filled with the spring and summer run off. This dam has gained prominence as a recreation spot.

BERT'S & LEN'S SERVICE SHOP

TOWING — REPAIRS FROM REPAINT TO REBORE
Coronation Alberta

SUPERIOR CLEANERS

Superior Work, Service and Satisfaction
Jones & Sims, Props. Coronation

COR-VET SALES

Dodge - DeSoto - Case Machinery - Sturdie Propane
G. S. B. Tkach, Prop. Coronation

CENTRAL DAIRY POOL

Irrigation is all we need to make this a prosperous country
Coronation Alberta

The Castor and Community Board of Trade

United in Spirit, Progressive in Action, Welcomes You
To Our Town

CO-OP SERVICE

Maple Leaf Petroleum and Repair Shop
Phone 138 L. J. Marshall, Prop.

CASTOR MACHINE SHOP

Complete Line of John Deere Machinery
Phone 21 T. B. Embree & Son, Props.

CASTOR MOTORS

Pontiac and Buick Cars, Cockshutt Farm Equipment

GENERAL INSURANCE

Phone 74 Castor

BAIN'S HOUSEHOLD FURNISHINGS

Phone 132 J. V. Bain, Prop.

COLE'S ELECTRIC

General Electric Appliances, Electric Wiring & Contracting
Phone 151 J. F. Cole, Prop.

CASTOR DRUG STORE

Phone 16 M. J. Bain & P. F. Bain, Props.

RED & WHITE STORE

Phone 112 H. J. Zinger, Jr.

CASTOR 5c TO \$1.00 STORE

Phone 8 J. P. Nett, Prop.

M. J. BRENNAN

Barrister, Solicitor and Notary Public
Phone 86 Castor

BROWN MOTORS

Ford and Monarch Cars
Phone 22 Castor

CASTOR AND DISTRICT SHEET METAL

Eavestroughing, Furnaces and General Metal Work

THE MAGNET STORE

General Merchants — For Service and Satisfaction
Phone 1 R. J. Wiart, Prop.



GROWTH WITH WATER — A field of oats is seen in the above photo. The height of the grain denotes that ample moisture has been applied through irrigation and the results are obvious.

WETTER'S FOOD MARKET

Phone 4

Castor

COSMOPOLITAN HOTEL

The Friendly Hotel. Modern Lunch Counter & Coffee Shop
Phone 34 Don Dorval, Prop.

STAN'S JEWELLRY STORE

Diamonds, Watches, Giftware, Guaranteed Watch Repair
Phone 164 Castor

CASTOR COMMUNITY HARDWARE

Phone 48 Marcil & LeClair, Props.

COLLEY'S LUMBER

Phone 53 Castor

JOHN SCHNELL & SONS

Garage, Blacksmith, Minneapolis Machinery
Phone 38 Castor

THE CASTOR THEATRE

The Town's Most Popular Entertainment Centre

BOARD OF TRADE — STETTTLER AND DISTRICT

The Community's Counsellor, Business Booster
and promoter of prosperity

McTAGGART MOTORS (Stettler) LTD.

Chevrolet and Oldsmobile Cars — Chevrolet Trucks
PHONE: 278 - 279 STETTTLER

J & P STORES

— QUALITY GROCERS —

STETTTLER

LACOMBE

RED HEAD SERVICE STATION

FUEL — OIL — GREASES
Corner Main St. and No. 12 Highway

TOWN OF STETTTLER

Every Day, in Every Way — Bigger and Better

CRAWFORD & TURNER

International Harvester

Welding

H. A. BLAIR

REAL ESTATE — INSURANCE PHONE 76 or 139

KROEGER BROS.

MASSEY-HARRIS SALES AND SERVICE
Consort Stettler

STREIT'S SALES & SERVICE

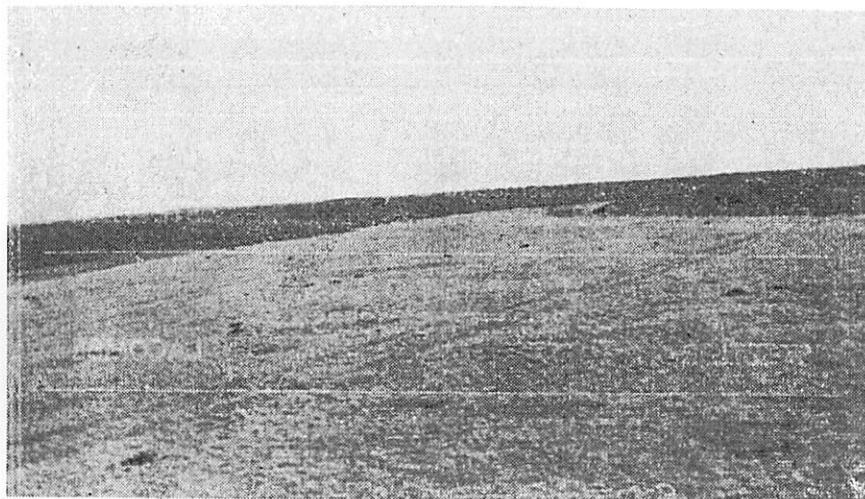
METEOR — LINCOLN — MERCURY
CARS AND TRUCKS — TELEPHONE 42

THIRSK 5c TO \$1.00 STORE

VISIT US WHEN YOU ARE IN STETTTLER

STETTTLER AGRICULTURAL ASSOCIATION

Maintains Fairgrounds Accommodation
Sustains Interest in Agricultural Shows and Sales



EAST BERRY CREEK DAM — Impounding the waters of the East Berry Creek. This structure is 1,000 feet long and 25 feet high. It too offers a large reservoir of water for stock and irrigation purposes.

JIMMIE'S SERVICE

CHEVROLET — OLDSMOBILE
SPRINKLER IRRIGATION EQUIPMENT

HANNA

ALBERTA

STETSON HATS — FORSYTH SHIRTS
HEADLIGHT OVERALLS — RITCHIE
G.W.G. WORK GARMENTS

CHARLIE'S MEN'S WEAR

HANNA

ALBERTA

INTERMEDIATE PROJECTS —

Your Association has co-operated with the P.F.R.A. in having established in this area a number of intermediate projects built with a view to tying in with the main project when constructed:

- Berry Creek Dam - 1948 8,000 irrigable acres
Cost \$158,000.00. Capacity 20,000 acre ft.
- Dead Fish Creek Dam at Cessford - 1949 4,000 irrigable acres
Cost \$47,832.00. Capacity 5,000 acre feet.
- Loveland Dam - 1954
Cost \$15,000.00. Capacity 6,000 acre ft.
- East Berry Creek Dam - 1949 1,500 irrigable acres
Cost \$9,677.00. Capacity 1,000 acre ft.
- Sounding Creek Dam - 1949 8,000 irrigable acres
Cost \$51,988.00. Storage capacity 5,600.
- Loyalist Creek Dam - 1950 2,000 irrigable acres
Cost \$14,993.00. Capacity 1,400 acre ft.

That these lands cannot produce on the present rainfall has been abundantly proven. A Government station at one of the average points in the area during the months April to September, for the years 1933 to 1944 inclusive shows the rainfall was as follows:

	1933	1934	1935	1936	1937	1938	1939	1940	1941	1942	1943
April	.46	.17	.43	.41	.29	.67	.20	2.00	.24	.51	.17
May	1.75	1.47	2.93	2.04	.95	2.92	2.70	1.18	2.54	1.05	1.38
June	1.06	2.56	2.97	1.29	1.22	2.07	5.75	1.98	1.44	4.98	1.82
July	.42	.18	1.61	.39	2.03	3.06	1.65	3.79	1.49	4.08	.72
Aug.	1.63	.39	2.13	1.96	1.85	2.79		.63	1.49	2.04	2.53
Sept.	.83	1.46	.24	.77	1.31	1.14		1.41	2.04	1.25	.24

Despite this scant rainfall, the fertility of the soil was apparent from the ample crops raised in any year from the precipitation even slightly exceeded the minimum.

HANNA CO-OPERATIVE ASS'N LTD.

HANNA

ALBERTA

LUMBER — HARDWARE — DRY GOODS — GROCERIES

"The Store That Shares The Profits"

C. ENGEL, Mgr., Hanna

Phone 40

IN CONCLUSION —

That development of irrigation from the water of the Red Deer River will benefit areas far removed from the district itself is well expressed in an editorial of the Edmonton Journal dealing with the Red Deer River project:

"Urban dwellers often fail to appreciate the truth that "all things are purchased with food" to quote Dr. W. C. Lowdermilk, assistant soils chief of the United States and a recent visitor in Edmonton. Where food supplies fail all else dies and history has shown that when that happens, population dwindles, even moves away in mass migrations.

"Irrigation is one of the methods used to store in the soil, rains which have been saved in natural or artificial lakes. Restoring fertility to soil by irrigation and farming methods suited to irrigated lands pays off in the long run.

The money needed to carry through projects such as the Red Deer River irrigation scheme is contributed by all of us, through taxation. Fifteen hundred families may be the first and direct beneficiaries but then the townsfolk in the revived area prosper also and finally the whole community is the gainer.

"Thus hundreds of thousands more than those who live in Hanna, or Coronation, or Youngstown, or Acadia Valley will hope that the Federal and Provincial Governments will be able to settle without delay any questions of responsibility or rights and will be able to get on with the big job of moisture conservation on the prairies."

Irrigation will supplement the present ranching economy by providing sure supplies of water, feed and pasture.

(Edmonton Journal, December 20th, 1945.)

A RECORD OF ACHIEVEMENT

The people of the Acadia country have a proud record in the building of the co-operative movement in general and in the development of co-operative organizations in their own area to serve themselves.

We feel sure that the efforts which are being made by the East Central Irrigation Association will be equally as successful in bringing irrigation to the district.

We join in wishing you every success in your endeavors.

U. F. A. CO-OP LTD.

and their petroleum suppliers

MAPLE LEAF PETROLEUM LTD.